

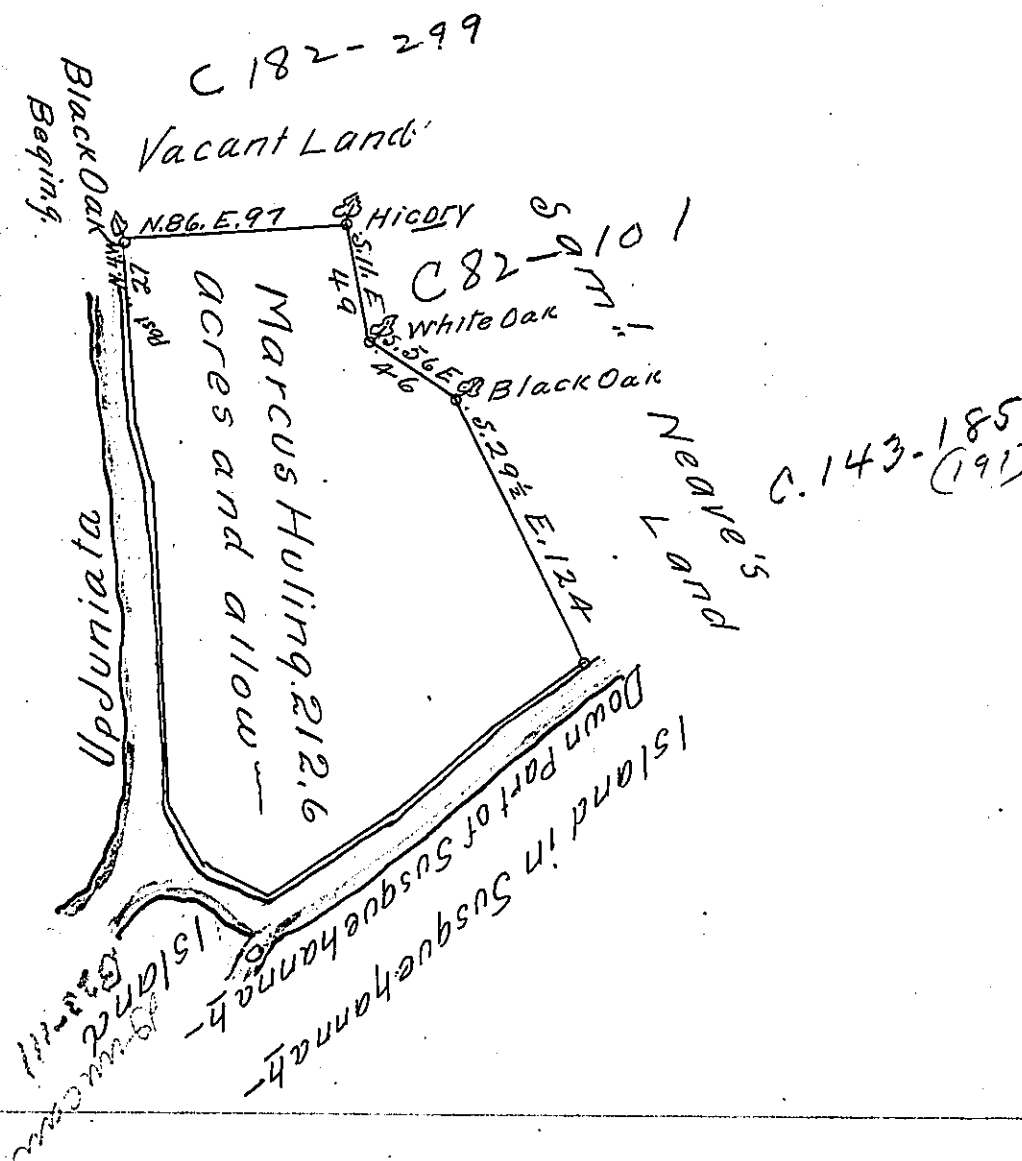
Courses and Distances
Down Susquehanna-

S 54 W 52
S 48 W 53
S 57 W 69
N 60 W 28
N 35 W 30

232 and

Up Juniata
N 4 W 137
N 16 W 26
N 6 1/2 W 52

215



The Draught of a Tract of Land called Amity situate in the Fork Between Susquehanna and Juniata in the County of Cumberland containing Two Hundred and Twelve acres 118 Perches with the usual allowance of Six Acres p Gent. Survey'd the 4th day of July Anno Domini 1767 for Marcus Huling in pursuance of an order of Survey Bearing Date at Philad^a the Fourth day of August Anno Dom 1766 N^o 762

p- W^m Maclay D.S.

To John Lukens Esq^r
Surveyor General

IN TESTIMONY that the above is a copy of the original remaining on file in the Department of Internal Affairs of Pennsylvania, made conformably to an Act of Assembly approved the 16th day of February, 1833, I have hereunto set my Hand and caused the Seal of said Department to be affixed at Harrisburg, this twenty seventh day of February 1905

Joseph P. ...
Secretary of Internal Affairs.